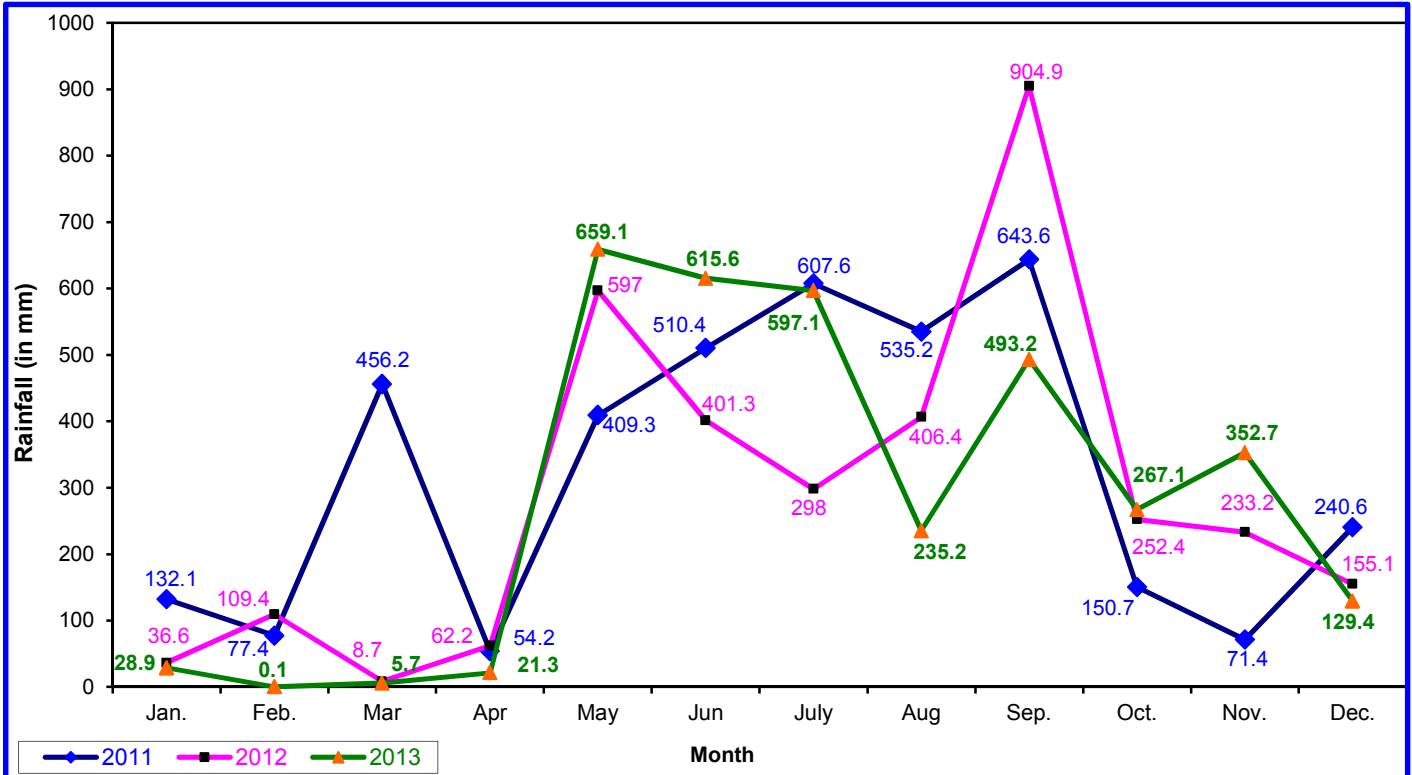


Comparative Statement showing total rainfall(mm) at Port Blair for last 3 years (2011 to 2013)

Month	2011		2012		2013		% Variation in monthly Rainfall	% Variation in cumulative Rainfall
	Monthly	Cumulative	Monthly	Cumulative	Monthly	Cumulative		
January	132.1	132.1	36.6	36.6	28.9	28.9	(-)21.04	-
February	77.4	209.5	109.4	146.0	0.1	29.0	(-)99.91	(-)80.14
March	456.2	665.7	8.7	154.7	5.7	34.7	(-)34.48	(-)77.57
April	54.2	719.9	62.2	216.9	21.3	56.0	(-)65.75	(-)74.18
May	409.3	1129.2	597.0	813.9	659.1	715.1	10.40	(-)12.14
June	510.4	1639.6	401.3	1215.2	615.6	1330.7	53.40	9.50
July	607.6	2247.2	298.0	1513.2	597.1	1927.8	100.37	27.40
August	535.2	2782.4	406.4	1919.6	235.2	2163.0	(-)42.13	12.68
September	643.6	3426.0	904.9	2824.5	493.2	2656.2	(-)45.50	(-)6.00
October	150.7	3576.7	252.4	3076.9	267.1	2923.3	5.82	(-)4.80
November	71.4	3648.1	233.2	3310.1	352.7	3276.0	51.24	(-)1.03
December	240.6	3888.7	155.1	3465.2	129.4	3405.4	(-)16.57	(-)1.73



Total Rainfall of different station during December for last two years

